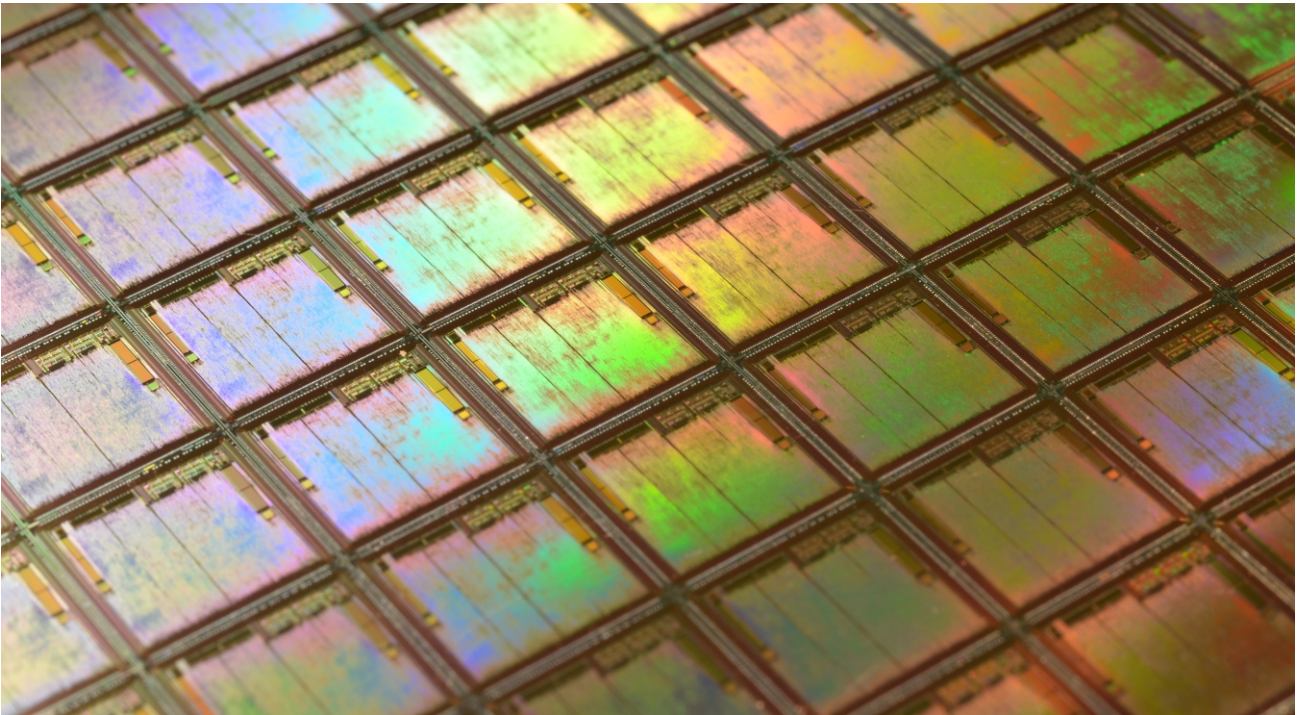


CRL - CIRCOLANDO / CENTRAL ELÉCTRICA

body object: hacked files



By the late 1970s, teenager Mitnick was already using the computer to mess up Los Angeles radio. One of his occupations was to break into customer service, transfer calls to his home, and answer with messages such as: "The requested number is 555-835 and a half. Can you type 'a half'?".

If "body can be considered the *hardware* of the complex technical arrangement called thought," as Lyotard told us, it may be possible for us to think that our *softwares* are composed of all that science has traditionally belittled: subjectivity, uncertainty, temporary, fleetingness, finitude, life.

Similarly, some performing arts creators have identified that the closest archives to which they can be integrated must be part of a living and pulsating body memory. When the methods of creation and programming increasingly standardize, it is time to *hack* bodies, to develop nontrivial or unauthorized modifications and manipulations.

From November 4th to December 1st, applications for the **Residency Program - Circolando / Power Station 2019 - PHASE 2** are open. The program aims to support the creation in the performing arts area, to stimulate research and investigation, by hosting a residence for artists who aim to reflect on the notion that governs the activities of space we inhabit in the celebration of our 20 years: **THE BODY IS A FILE, THE FILE IS A BODY.**

We are then calling for work partnerships with poetic and artistic freedom to *hack* the *modi operandi* of creation, offering rehearsal studio, financial support and artistic consultancy, in a residence to be held from January 13th to 31st, 2020, with informal public presentation on January 29th. For non-residents in Porto, the company also offers accommodation.

Can you type "a half"? Antivirus software is disabled. Attack them!

CRL - RESIDENCY CIRCOLANDO/POWER STATION 2019.2 PROGRAM REGULATION

The second open call phase of Circolando/Power Station [Porto] will support the creation phase of an original performing arts project.

We aim to encourage dialogue, exchange and experimentation. To find new ways of being from two questions: What files does your body carry? How to hack them?

RESIDENCY SUPPORT

Residency support for an original performing arts project in creation phase, to be held from January 13th to 31st 2020, with informal public presentation. Both the residency and final presentation will take place at Circolando Space located at CACE Cultural do Porto.

1. Creation support grant of €1.250 (one thousand two hundred and fifty euro), upon presentation of receipt;
2. Accommodation in apartment with capacity up to 04 people, for artists not resident in Porto;
3. Possibility of artistic counselling to the project;
4. Promotional support of the project by emailing to Circolando's national and international database contacts, social networks and the company's website;
5. Organization of an informal final public presentation in Circolando space located at CACE Cultural do Porto.

CALENDAR

APPLICATIONS

November 04th to December 1st 2019

FINAL RESULTS

December 3rd 2019

RESIDENCY PERIOD

January 13th to 31st 2020

APPLICATIONS

Applications can be written in Portuguese, Spanish or English, until December 1st at 11:59 PM (Daylight Savings Time Porto, GMT +0), through specific application form completely filled and sent to the email residencias@circolando.com with the subject "OPEN CALL APPLICATION".

The result will be announced on December 3rd, through our website and social networks. Doubts can be sent to the same email with the title "OPEN CALL QUESTIONS".

GENERAL CONDITIONS

The person responsible for the selected project should:

1. Comply with the issues established in this call;
2. Assure the organization of travel, food, insurance and health care coverage during the period of residency;
3. Ensure the mention to the support in the project promotion materials with the following phrase "Creation support by Circolando Residency Program" or in the "Support" section of the credits.

CRL - RESIDENCY CIRCOLANDO/POWER STATION 2019.2 SPACES

RESIDENCY SPACES

L ROOM

Large rehearsal room [total area: 9.5m (width) x 17m (length) x 4.5m (roof beams at 4.5m)] with natural light in a quiet place. The space is divided in two by a curtain: one rehearsal space [linoleum area of 9.5m x 13m + carpeted support space of 9,5 x 4m] and one living space. Space equipped with a simple sound system and wi-fi connection. Lighting material may be suspended from the ceiling considering the limits of the available electrical power.

WHITE ROOM

Rehearsal room with a total area of 10m (width) x 8m (length) x 5m, with natural light in a quiet place. Linoleum area of 10m x 8m. Space equipped with a simple sound system and wi-fi connection.

** Access to the bathroom is shared with the other occupants of the CACE Cultural. Possibility of using shower.*

*** Artists in residency must comply with health and safety regulations and schedule of CACE Cultural.*

ACCOMMODATION

2 bedroom apartment in Campanhã, 10 minutes' walk from the residency space. The apartment has 2 rooms with bunk beds, 1 bathroom, 1 full equipped kitchen, 1 living room and 1 balcony. With wi-fi connection.

**** Artists in residency must comply with the use regulation of the space.*

